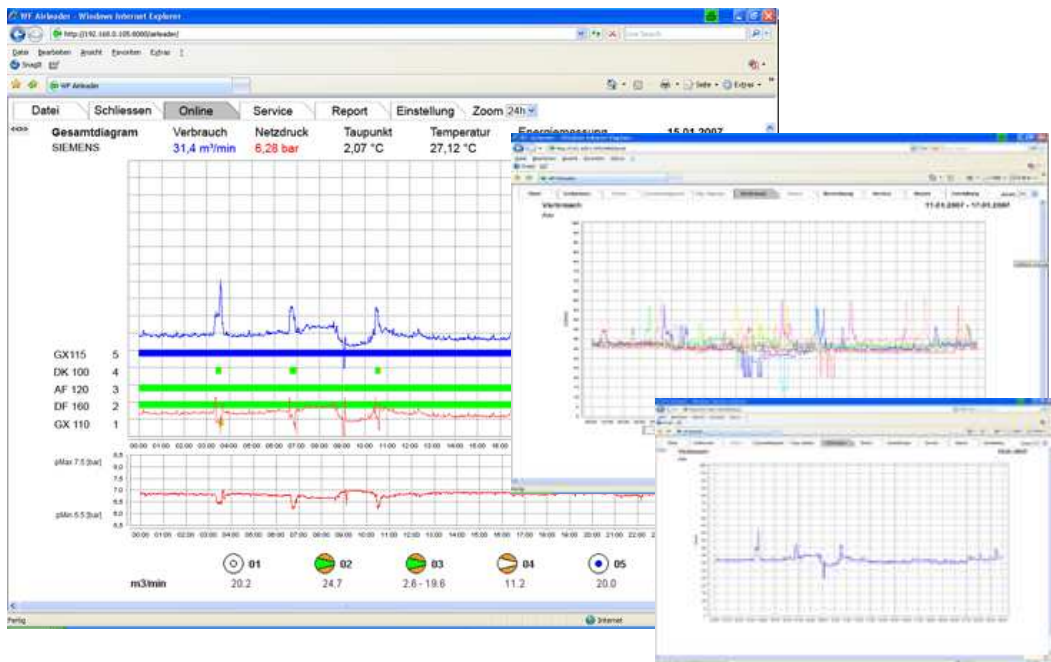


# airleader

## Compressor Management

### Modbus Interface documentation V 05/201008



## Modbus Interface short description

Airleader Modbus Interface represent the Airleader data in Modbus protocol.

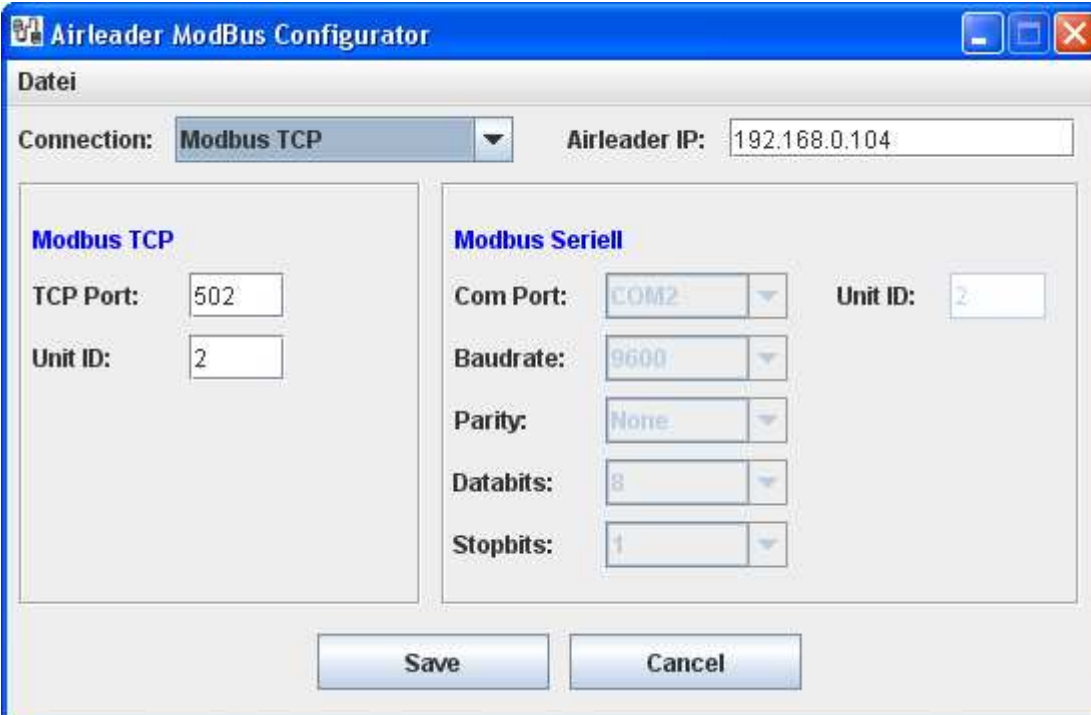
There are two modes available:

1. Modbus TCP
2. Modbus serial ASCII

### Installation:

Start the program Airleader-Modbus-Interface-?????.exe, and follow the commands. After installing the configurator starts. Here you can choose between the modes, configure the controller's IP address, and modify the TCP or serial properties. The Modbus Interface always works as Modbus Slave.

### Mode Modbus TCP:



The screenshot shows the 'Airleader ModBus Configurator' window. At the top, the title bar reads 'Airleader ModBus Configurator'. Below the title bar, there is a 'Datei' menu. The main area is divided into two sections: 'Modbus TCP' and 'Modbus Seriell'. The 'Modbus TCP' section is active and shows 'TCP Port: 502' and 'Unit ID: 2'. The 'Modbus Seriell' section shows 'Com Port: COM2', 'Baudrate: 9600', 'Parity: None', 'Databits: 8', and 'Stopbits: 1'. At the top right, there is a field for 'Airleader IP: 192.168.0.104'. At the bottom, there are 'Save' and 'Cancel' buttons.

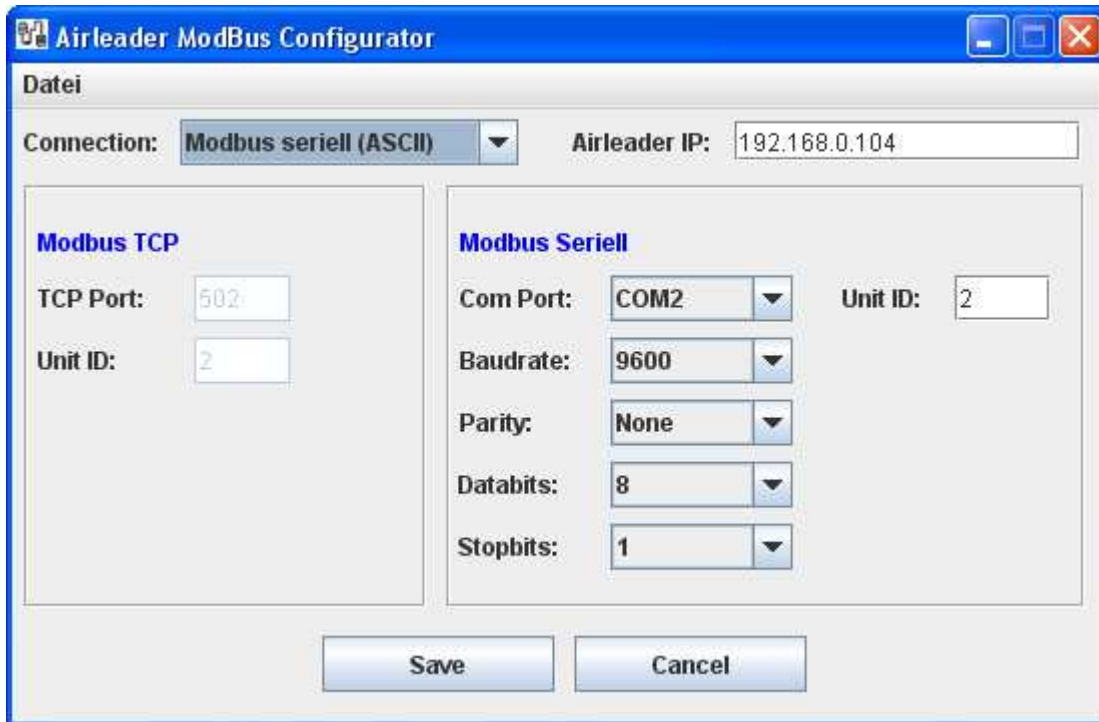
Modify the TCP Port if necessary (default is 502).

Set the Airleader IP field to the IP of your controller.

Unit ID is defined by your IP address and not used in the TCP mode.

Click on save and the service will be updated and restarted.

## Mode Modbus serial ASCII:



The screenshot shows the 'Airleader ModBus Configurator' window. At the top, the title bar reads 'Airleader ModBus Configurator'. Below the title bar, there is a 'Datei' menu. The main area is divided into two sections: 'Modbus TCP' and 'Modbus Seriell'. The 'Connection' dropdown is set to 'Modbus seriell (ASCII)'. The 'Airleader IP' field contains '192.168.0.104'. In the 'Modbus TCP' section, the 'TCP Port' is '502' and the 'Unit ID' is '2'. In the 'Modbus Seriell' section, the 'Com Port' is 'COM2', 'Baudrate' is '9600', 'Parity' is 'None', 'Databits' is '8', and 'Stopbits' is '1'. The 'Unit ID' field in the 'Modbus Seriell' section also contains '2'. At the bottom, there are 'Save' and 'Cancel' buttons.

Modify the serial settings for your needs.

Unit ID have to be set. This is the address of the client in the Modbus Network.

Unit ID must be unique in the network.

Click on save and the service will be updated and restarted.

### Input Register

Datentyp:32bit float

Modbus address	Type	Register no	Control	Mode
30001	Input register	1	Consumption	Read only
30002		2		
30003	Input register	3	Net pressure	Read only
30004		4		
30005	Input register	5	Master AE2	Read only
30006		6		
30007	Input register	7	Master AE3	Read only
30008		8		
30009	Input register	9	Master AE4	Read only
30010		10		
30011	Input register	11	Modul 1 AE1	Read only
30012		12		
30013	Input register	13	Modul 1 AE2	Read only
30014		14		
30015	Input register	15	Modul 2 AE1	Read only
30016		16		
30017	Input register	17	Modul 2 AE2	Read only
30018		18		
30019	Input register	19	Modul 3 AE1	Read only
30020		20		
30021	Input register	21	Modul 3 AE2	Read only
30022		22		
30023	Input register	23	Modul 4 AE1	Read only
30024		24		
30025	Input register	25	Modul 4 AE2	Read only
30026		26		
30027	Input register	27	Modul 5 AE1	Read only
30028		28		
30029	Input register	29	Modul 5 AE2	Read only
30030		30		
30031	Input register	31	Modul 6 AE1	Read only
30032		32		
30033	Input register	33	Modul 6 AE2	Read only
30034		34		
30035	Input register	35	Modul 7 AE1	Read only
30036		36		
30037	Input register	37	Modul 7 AE2	Read only
30038		38		
30039	Input register	39	Modul 8 AE1	Read only
30040		40		
30041	Input register	41	Modul 8 AE2	Read only
30042		42		
30043	Input register	43	Modul 9 AE1	Read only
30044		44		
30045	Input register	45	Modul 9 AE2	Read only
30046		46		
30047	Input register	47	Modul 10 AE1	Read only
30048		48		
30049	Input register	49	Modul 10 AE2	Read only
30050		50		

30051	Input register	51	Modul 11 AE1	Read only
30052		52		
30053	Input register	53	Modul 11 AE2	Read only
30054		54		
30055	Input register	55	Modul 12 AE1	Read only
30056		56		
30057	Input register	57	Modul 12 AE2	Read only
30058		58		
30059	Input register	59	Modul 13 AE1	Read only
30060		60		
30061	Input register	61	Modul 13 AE2	Read only
30062		62		
30063	Input register	63	Modul 14 AE1	Read only
30064		64		
30065	Input register	65	Modul 14 AE2	Read only
30066		66		
30067	Input register	67	Modul 15 AE1	Read only
30068		68		
30069	Input register	69	Modul 15 AE2	Read only
30070		70		
30071	Input register	71	Modul 16 AE1	Read only
30072		72		
30073	Input register	73	Modul 16 AE2	Read only
30074		74		
30075	Input register	75	Modul 17 AE1	Read only
30076		76		
30077	Input register	77	Modul 17 AE2	Read only
30078		78		
30079	Input register	79	Modul 18 AE1	Read only
30080		80		
30081	Input register	81	Modul 18 AE2	Read only
30082		82		
30083	Input register	83	Modul 19 AE1	Read only
30084		84		
30085	Input register	85	Modul 19 AE2	Read only
30086		86		
30087	Input register	87	Modul 20 AE1	Read only
30088		88		
30089	Input register	89	Modul 20 AE2	Read only
30090		90		
30091	Input register	91	Modul 21 AE1	Read only
30092		92		
30093	Input register	93	Modul 21 AE2	Read only
30094		94		
30095	Input register	95	Modul 22 AE1	Read only
30096		96		
30097	Input register	97	Modul 22 AE2	Read only
30098		98		
30099	Input register	99	Modul 23 AE1	Read only
30100		100		
30101	Input register	101	Modul 23 AE2	Read only
30102		102		
30103	Input register	103	Modul 24 AE1	Read only
30104		104		
30105	Input register	105	Modul 24 AE2	Read only

30106		106		
30107	Input register	107	Modul 25 AE1	Read only
30108		108		
30109	Input register	109	Modul 25 AE2	Read only
30110		110		
30111	Input register	111	Modul 26 AE1	Read only
30112		112		
30113	Input register	113	Modul 26 AE2	Read only
30114		114		
30115	Input register	115	Modul 27 AE1	Read only
30116		116		
30117	Input register	117	Modul 27 AE2	Read only
30118		118		
30119	Input register	119	Modul 28 AE1	Read only
30120		120		
30121	Input register	121	Modul 28 AE2	Read only
30122		122		
30123	Input register	123	Modul 29 AE1	Read only
30124		124		
30125	Input register	125	Modul 29 AE2	Read only
30126		126		
30127	Input register	127	Modul 30 AE1	Read only
30128		128		
30129	Input register	129	Modul 30 AE2	Read only
30130		130		
30131	Input register	131	Modul 31 AE1	Read only
30132		132		
30133	Input register	133	Modul 31 AE2	Read only
30134		134		
30135	Input register	135	Modul 32 AE1	Read only
30136		136		
30137	Input register	137	Modul 32 AE2	Read only
30138		138		
30139	Input register	139	Modul 33 AE1	Read only
30140		140		
30141	Input register	141	Modul 33 AE2	Read only
30142		142		
30143	Input register	143	Modul 34 AE1	Read only
30144		144		
30145	Input register	145	Modul 34 AE2	Read only
30146		146		
30147	Input register	147	Modul 35 AE1	Read only
30148		148		
30149	Input register	149	Modul 35 AE2	Read only
30150		150		
30151	Input register	151	Modul 36 AE1	Read only
30152		152		
30153	Input register	153	Modul 36 AE2	Read only
30154		154		
30155	Input register	155	Modul 37 AE1	Read only
30156		156		
30157	Input register	157	Modul 37 AE2	Read only
30158		158		
30159	Input register	159	Modul 38 AE1	Read only
30160		160		

30161	Input register	161	Modul 38 AE2	Read only
30162		162		
30163	Input register	163	Modul 39 AE1	Read only
30164		164		
30165	Input register	165	Modul 39 AE2	Read only
30166		166		
30167	Input register	167	Modul 40 AE1	Read only
30168		168		
30169	Input register	169	Modul 40 AE2	Read only
30170		170		
30171	Input register	171	Modul 41 AE1	Read only
30172		172		
30173	Input register	173	Modul 41 AE2	Read only
30174		174		
30175	Input register	175	Modul 42 AE1	Read only
30176		176		
30177	Input register	177	Modul 42 AE2	Read only
30178		178		
30179	Input register	179	Modul 43 AE1	Read only
30180		180		
30181	Input register	181	Modul 43 AE2	Read only
30182		182		
30183	Input register	183	Modul 44 AE1	Read only
30184		184		
30185	Input register	185	Modul 44 AE2	Read only
30186		186		
30187	Input register	187	Modul 45 AE1	Read only
30188		188		
30189	Input register	189	Modul 45 AE2	Read only
30190		190		
30191	Input register	191	Modul 46 AE1	Read only
30192		192		
30193	Input register	193	Modul 46 AE2	Read only
30194		194		
30195	Input register	195	Modul 47 AE1	Read only
30196		196		
30197	Input register	197	Modul 47 AE2	Read only
30198		198		
30199	Input register	199	Modul 48 AE1	Read only
30200		200		
30201	Input register	201	Modul 48 AE2	Read only
30202		202		
30203	Input register	203	Modul 49 AE1	Read only
30204		204		
30205	Input register	205	Modul 49 AE2	Read only
30206		206		
30207	Input register	207	Modul 50 AE1	Read only
30208		208		
30209	Input register	209	Modul 50 AE2	Read only
30210		210		
30211	Input register	211	Modul 51 AE1	Read only
30212		212		
30213	Input register	213	Modul 51 AE2	Read only
30214		214		
30215	Input register	215	Modul 52 AE1	Read only

30216		216		
30217	Input register	217	Modul 52 AE2	Read only
30218		218		
30219	Input register	219	Modul 53 AE1	Read only
30220		220		
30221	Input register	221	Modul 53 AE2	Read only
30222		222		
30223	Input register	223	Modul 54 AE1	Read only
30224		224		
30225	Input register	225	Modul 54 AE2	Read only
30226		226		
30227	Input register	227	Modul 55 AE1	Read only
30228		228		
30229	Input register	229	Modul 55 AE2	Read only
30230		230		
30231	Input register	231	Modul 56 AE1	Read only
30232		232		
30233	Input register	233	Modul 56 AE2	Read only
30234		234		
30235	Input register	235	Modul 57 AE1	Read only
30236		236		
30237	Input register	237	Modul 57 AE2	Read only
30238		238		
30239	Input register	239	Modul 58 AE1	Read only
30240		240		
30241	Input register	241	Modul 58 AE2	Read only
30242		242		
30243	Input register	243	Modul 59 AE1	Read only
30244		244		
30245	Input register	245	Modul 59 AE2	Read only
30246		246		
30247	Input register	247	Modul 60 AE1	Read only
30248		248		
30249	Input register	249	Modul 60 AE2	Read only
30250		250		
30251	Input register	251	Modul 61 AE1	Read only
30252		252		
30253	Input register	253	Modul 61 AE2	Read only
30254		254		
30255	Input register	255	Modul 62 AE1	Read only
30256		256		
30257	Input register	257	Modul 62 AE2	Read only
30258		258		
30259	Input register	259	Modul 63 AE1	Read only
30260		260		
30261	Input register	261	Modul 63 AE2	Read only
30262		262		
30263	Input register	263	Modul 64 AE1	Read only
30264		264		
30265	Input register	265	Modul 64 AE2	Read only
30266		266		



## Discret Inputs

Datentyp:boolean

Modbus adress	Type	Register no	Control	Mode
10001	Discret input	1	Modul 1 fault	Read only
10002	Discret input	2	Modul 1 motor run	Read only
10003	Discret input	3	Modul 1 ready	Read only
10004	Discret input	4	Modul 1 loaded	Read only
10005	Discret input	5	Modul 1 error	Read only
10006	Discret input	6	Modul 1 R1	Read only
10007	Discret input	7	Modul 1 R2	Read only
10008	Discret input	8	Modul 2 fault	Read only
10009	Discret input	9	Modul 2 motor run	Read only
10010	Discret input	10	Modul 2 ready	Read only
10011	Discret input	11	Modul 2 loaded	Read only
10012	Discret input	12	Modul 2 error	Read only
10013	Discret input	13	Modul 2 R1	Read only
10014	Discret input	14	Modul 2 R2	Read only
10015	Discret input	15	Modul 3 fault	Read only
10016	Discret input	16	Modul 3 motor run	Read only
10017	Discret input	17	Modul 3 ready	Read only
10018	Discret input	18	Modul 3 loaded	Read only
10019	Discret input	19	Modul 3 error	Read only
10020	Discret input	20	Modul 3 R1	Read only
10021	Discret input	21	Modul 3 R2	Read only
10022	Discret input	22	Modul 4 fault	Read only
10023	Discret input	23	Modul 4 motor run	Read only
10024	Discret input	24	Modul 4 ready	Read only
10025	Discret input	25	Modul 4 loaded	Read only
10026	Discret input	26	Modul 4 error	Read only
10027	Discret input	27	Modul 4 R1	Read only
10028	Discret input	28	Modul 4 R2	Read only
10029	Discret input	29	Modul 5 fault	Read only
10030	Discret input	30	Modul 5 motor run	Read only
10031	Discret input	31	Modul 5 ready	Read only
10032	Discret input	32	Modul 5 loaded	Read only
10033	Discret input	33	Modul 5 error	Read only
10034	Discret input	34	Modul 5 R1	Read only
10035	Discret input	35	Modul 5 R2	Read only
10036	Discret input	36	Modul 6 fault	Read only
10037	Discret input	37	Modul 6 motor run	Read only
10038	Discret input	38	Modul 6 ready	Read only
10039	Discret input	39	Modul 6 loaded	Read only
10040	Discret input	40	Modul 6 error	Read only
10041	Discret input	41	Modul 6 R1	Read only
10042	Discret input	42	Modul 6 R2	Read only
10043	Discret input	43	Modul 7 fault	Read only
10044	Discret input	44	Modul 7 motor run	Read only
10045	Discret input	45	Modul 7 ready	Read only
10046	Discret input	46	Modul 7 loaded	Read only

10047	Discret input	47	Modul 7 error	Read only
10048	Discret input	48	Modul 7 R1	Read only
10049	Discret input	49	Modul 7 R2	Read only
10050	Discret input	50	Modul 8 fault	Read only
10051	Discret input	51	Modul 8 motor run	Read only
10052	Discret input	52	Modul 8 ready	Read only
10053	Discret input	53	Modul 8 loaded	Read only
10054	Discret input	54	Modul 8 error	Read only
10055	Discret input	55	Modul 8 R1	Read only
10056	Discret input	56	Modul 8 R2	Read only
10057	Discret input	57	Modul 9 fault	Read only
10058	Discret input	58	Modul 9 motor run	Read only
10059	Discret input	59	Modul 9 ready	Read only
10060	Discret input	60	Modul 9 loaded	Read only
10061	Discret input	61	Modul 9 error	Read only
10062	Discret input	62	Modul 9 R1	Read only
10063	Discret input	63	Modul 9 R2	Read only
10064	Discret input	64	Modul 10 fault	Read only
10065	Discret input	65	Modul 10 motor run	Read only
10066	Discret input	66	Modul 10 ready	Read only
10067	Discret input	67	Modul 10 loaded	Read only
10068	Discret input	68	Modul 10 error	Read only
10069	Discret input	69	Modul 10 R1	Read only
10070	Discret input	70	Modul 10 R2	Read only
10071	Discret input	71	Modul 11 fault	Read only
10072	Discret input	72	Modul 11 motor run	Read only
10073	Discret input	73	Modul 11 ready	Read only
10074	Discret input	74	Modul 11 loaded	Read only
10075	Discret input	75	Modul 11 error	Read only
10076	Discret input	76	Modul 11 R1	Read only
10077	Discret input	77	Modul 11 R2	Read only
10078	Discret input	78	Modul 12 fault	Read only
10079	Discret input	79	Modul 12 motor run	Read only
10080	Discret input	80	Modul 12 ready	Read only
10081	Discret input	81	Modul 12 loaded	Read only
10082	Discret input	82	Modul 12 error	Read only
10083	Discret input	83	Modul 12 R1	Read only
10084	Discret input	84	Modul 12 R2	Read only
10085	Discret input	85	Modul 13 fault	Read only
10086	Discret input	86	Modul 13 motor run	Read only
10087	Discret input	87	Modul 13 ready	Read only
10088	Discret input	88	Modul 13 loaded	Read only
10089	Discret input	89	Modul 13 error	Read only
10090	Discret input	90	Modul 13 R1	Read only
10091	Discret input	91	Modul 13 R2	Read only
10092	Discret input	92	Modul 14 fault	Read only
10093	Discret input	93	Modul 14 motor run	Read only
10094	Discret input	94	Modul 14 ready	Read only
10095	Discret input	95	Modul 14 loaded	Read only
10096	Discret input	96	Modul 14 error	Read only
10097	Discret input	97	Modul 14 R1	Read only
10098	Discret input	98	Modul 14 R2	Read only

10099	Discret input	99	Modul 15 fault	Read only
10100	Discret input	100	Modul 15 motor run	Read only
10101	Discret input	101	Modul 15 ready	Read only
10102	Discret input	102	Modul 15 loaded	Read only
10103	Discret input	103	Modul 15 error	Read only
10104	Discret input	104	Modul 15 R1	Read only
10105	Discret input	105	Modul 15 R2	Read only
10106	Discret input	106	Modul 16 fault	Read only
10107	Discret input	107	Modul 16 motor run	Read only
10108	Discret input	108	Modul 16 ready	Read only
10109	Discret input	109	Modul 16 loaded	Read only
10110	Discret input	110	Modul 16 error	Read only
10111	Discret input	111	Modul 16 R1	Read only
10112	Discret input	112	Modul 16 R2	Read only
10113	Discret input	113	Modul 17 S	Read only
10114	Discret input	114	Modul 17 M	Read only
10115	Discret input	115	Modul 17 B	Read only
10116	Discret input	116	Modul 17 L	Read only
10117	Discret input	117	Modul 17 error	Read only
10118	Discret input	118	Modul 17 R1	Read only
10119	Discret input	119	Modul 17 R2	Read only
10120	Discret input	120	Modul 18 S	Read only
10121	Discret input	121	Modul 18 M	Read only
10122	Discret input	122	Modul 18 B	Read only
10123	Discret input	123	Modul 18 L	Read only
10124	Discret input	124	Modul 18 error	Read only
10125	Discret input	125	Modul 18 R1	Read only
10126	Discret input	126	Modul 18 R2	Read only
10127	Discret input	127	Modul 19 S	Read only
10128	Discret input	128	Modul 19 M	Read only
10129	Discret input	129	Modul 19 B	Read only
10130	Discret input	130	Modul 19 L	Read only
10131	Discret input	131	Modul 19 error	Read only
10132	Discret input	132	Modul 19 R1	Read only
10133	Discret input	133	Modul 19 R2	Read only
10134	Discret input	134	Modul 20 S	Read only
10135	Discret input	135	Modul 20 M	Read only
10136	Discret input	136	Modul 20 B	Read only
10137	Discret input	137	Modul 20 L	Read only
10138	Discret input	138	Modul 20 error	Read only
10139	Discret input	139	Modul 20 R1	Read only
10140	Discret input	140	Modul 20 R2	Read only
10141	Discret input	141	Modul 21 S	Read only
10142	Discret input	142	Modul 21 M	Read only
10143	Discret input	143	Modul 21 B	Read only
10144	Discret input	144	Modul 21 L	Read only
10145	Discret input	145	Modul 21 error	Read only
10146	Discret input	146	Modul 21 R1	Read only
10147	Discret input	147	Modul 21 R2	Read only
10148	Discret input	148	Modul 22 S	Read only
10149	Discret input	149	Modul 22 M	Read only
10150	Discret input	150	Modul 22 B	Read only

10151	Discret input	151	Modul 22 L	Read only
10152	Discret input	152	Modul 22 error	Read only
10153	Discret input	153	Modul 22 R1	Read only
10154	Discret input	154	Modul 22 R2	Read only
10155	Discret input	155	Modul 23 S	Read only
10156	Discret input	156	Modul 23 M	Read only
10157	Discret input	157	Modul 23 B	Read only
10158	Discret input	158	Modul 23 L	Read only
10159	Discret input	159	Modul 23 error	Read only
10160	Discret input	160	Modul 23 R1	Read only
10161	Discret input	161	Modul 23 R2	Read only
10162	Discret input	162	Modul 24 S	Read only
10163	Discret input	163	Modul 24 M	Read only
10164	Discret input	164	Modul 24 B	Read only
10165	Discret input	165	Modul 24 L	Read only
10166	Discret input	166	Modul 24 error	Read only
10167	Discret input	167	Modul 24 R1	Read only
10168	Discret input	168	Modul 24 R2	Read only
10169	Discret input	169	Modul 25 S	Read only
10170	Discret input	170	Modul 25 M	Read only
10171	Discret input	171	Modul 25 B	Read only
10172	Discret input	172	Modul 25 L	Read only
10173	Discret input	173	Modul 25 error	Read only
10174	Discret input	174	Modul 25 R1	Read only
10175	Discret input	175	Modul 25 R2	Read only
10176	Discret input	176	Modul 26 S	Read only
10177	Discret input	177	Modul 26 M	Read only
10178	Discret input	178	Modul 26 B	Read only
10179	Discret input	179	Modul 26 L	Read only
10180	Discret input	180	Modul 26 error	Read only
10181	Discret input	181	Modul 26 R1	Read only
10182	Discret input	182	Modul 26 R2	Read only
10183	Discret input	183	Modul 27 S	Read only
10184	Discret input	184	Modul 27 M	Read only
10185	Discret input	185	Modul 27 B	Read only
10186	Discret input	186	Modul 27 L	Read only
10187	Discret input	187	Modul 27 error	Read only
10188	Discret input	188	Modul 27 R1	Read only
10189	Discret input	189	Modul 27 R2	Read only
10190	Discret input	190	Modul 28 S	Read only
10191	Discret input	191	Modul 28 M	Read only
10192	Discret input	192	Modul 28 B	Read only
10193	Discret input	193	Modul 28 L	Read only
10194	Discret input	194	Modul 28 error	Read only
10195	Discret input	195	Modul 28 R1	Read only
10196	Discret input	196	Modul 28 R2	Read only
10197	Discret input	197	Modul 29 S	Read only
10198	Discret input	198	Modul 29 M	Read only
10199	Discret input	199	Modul 29 B	Read only
10200	Discret input	200	Modul 29 L	Read only
10201	Discret input	201	Modul 29 error	Read only
10202	Discret input	202	Modul 29 R1	Read only

10203	Discret input	203	Modul 29 R2	Read only
10204	Discret input	204	Modul 30 S	Read only
10205	Discret input	205	Modul 30 M	Read only
10206	Discret input	206	Modul 30 B	Read only
10207	Discret input	207	Modul 30 L	Read only
10208	Discret input	208	Modul 30 error	Read only
10209	Discret input	209	Modul 30 R1	Read only
10210	Discret input	210	Modul 30 R2	Read only
10211	Discret input	211	Modul 31 S	Read only
10212	Discret input	212	Modul 31 M	Read only
10213	Discret input	213	Modul 31 B	Read only
10214	Discret input	214	Modul 31 L	Read only
10215	Discret input	215	Modul 31 error	Read only
10216	Discret input	216	Modul 31 R1	Read only
10217	Discret input	217	Modul 31 R2	Read only
10218	Discret input	218	Modul 32 S	Read only
10219	Discret input	219	Modul 32 M	Read only
10220	Discret input	220	Modul 32 B	Read only
10221	Discret input	221	Modul 32 L	Read only
10222	Discret input	222	Modul 32 error	Read only
10223	Discret input	223	Modul 32 R1	Read only
10224	Discret input	224	Modul 32 R2	Read only
10225	Discret input	225	Modul 33 S	Read only
10226	Discret input	226	Modul 33 M	Read only
10227	Discret input	227	Modul 33 B	Read only
10228	Discret input	228	Modul 33 L	Read only
10229	Discret input	229	Modul 33 error	Read only
10230	Discret input	230	Modul 33 R1	Read only
10231	Discret input	231	Modul 33 R2	Read only
10232	Discret input	232	Modul 34 S	Read only
10233	Discret input	233	Modul 34 M	Read only
10234	Discret input	234	Modul 34 B	Read only
10235	Discret input	235	Modul 34 L	Read only
10236	Discret input	236	Modul 34 error	Read only
10237	Discret input	237	Modul 34 R1	Read only
10238	Discret input	238	Modul 34 R2	Read only
10239	Discret input	239	Modul 35 S	Read only
10240	Discret input	240	Modul 35 M	Read only
10241	Discret input	241	Modul 35 B	Read only
10242	Discret input	242	Modul 35 L	Read only
10243	Discret input	243	Modul 35 error	Read only
10244	Discret input	244	Modul 35 R1	Read only
10245	Discret input	245	Modul 35 R2	Read only
10246	Discret input	246	Modul 36 S	Read only
10247	Discret input	247	Modul 36 M	Read only
10248	Discret input	248	Modul 36 B	Read only
10249	Discret input	249	Modul 36 L	Read only
10250	Discret input	250	Modul 36 error	Read only
10251	Discret input	251	Modul 36 R1	Read only
10252	Discret input	252	Modul 36 R2	Read only
10253	Discret input	253	Modul 37 S	Read only
10254	Discret input	254	Modul 37 M	Read only

10255	Discret input	255	Modul 37 B	Read only
10256	Discret input	256	Modul 37 L	Read only
10257	Discret input	257	Modul 37 error	Read only
10258	Discret input	258	Modul 37 R1	Read only
10259	Discret input	259	Modul 37 R2	Read only
10260	Discret input	260	Modul 38 S	Read only
10261	Discret input	261	Modul 38 M	Read only
10262	Discret input	262	Modul 38 B	Read only
10263	Discret input	263	Modul 38 L	Read only
10264	Discret input	264	Modul 38 error	Read only
10265	Discret input	265	Modul 38 R1	Read only
10266	Discret input	266	Modul 38 R2	Read only
10267	Discret input	267	Modul 39 S	Read only
10268	Discret input	268	Modul 39 M	Read only
10269	Discret input	269	Modul 39 B	Read only
10270	Discret input	270	Modul 39 L	Read only
10271	Discret input	271	Modul 39 error	Read only
10272	Discret input	272	Modul 39 R1	Read only
10273	Discret input	273	Modul 39 R2	Read only
10274	Discret input	274	Modul 40 S	Read only
10275	Discret input	275	Modul 40 M	Read only
10276	Discret input	276	Modul 40 B	Read only
10277	Discret input	277	Modul 40 L	Read only
10278	Discret input	278	Modul 40 error	Read only
10279	Discret input	279	Modul 40 R1	Read only
10280	Discret input	280	Modul 40 R2	Read only
10281	Discret input	281	Modul 41 S	Read only
10282	Discret input	282	Modul 41 M	Read only
10283	Discret input	283	Modul 41 B	Read only
10284	Discret input	284	Modul 41 L	Read only
10285	Discret input	285	Modul 41 error	Read only
10286	Discret input	286	Modul 41 R1	Read only
10287	Discret input	287	Modul 41 R2	Read only
10288	Discret input	288	Modul 42 S	Read only
10289	Discret input	289	Modul 42 M	Read only
10290	Discret input	290	Modul 42 B	Read only
10291	Discret input	291	Modul 42 L	Read only
10292	Discret input	292	Modul 42 error	Read only
10293	Discret input	293	Modul 42 R1	Read only
10294	Discret input	294	Modul 42 R2	Read only
10295	Discret input	295	Modul 43 S	Read only
10296	Discret input	296	Modul 43 M	Read only
10297	Discret input	297	Modul 43 B	Read only
10298	Discret input	298	Modul 43 L	Read only
10299	Discret input	299	Modul 43 error	Read only
10300	Discret input	300	Modul 43 R1	Read only
10301	Discret input	301	Modul 43 R2	Read only
10302	Discret input	302	Modul 44 S	Read only
10303	Discret input	303	Modul 44 M	Read only
10304	Discret input	304	Modul 44 B	Read only
10305	Discret input	305	Modul 44 L	Read only
10306	Discret input	306	Modul 44 error	Read only



10307	Discret input	307	Modul 44 R1	Read only
10308	Discret input	308	Modul 44 R2	Read only
10309	Discret input	309	Modul 45 S	Read only
10310	Discret input	310	Modul 45 M	Read only
10311	Discret input	311	Modul 45 B	Read only
10312	Discret input	312	Modul 45 L	Read only
10313	Discret input	313	Modul 45 error	Read only
10314	Discret input	314	Modul 45 R1	Read only
10315	Discret input	315	Modul 45 R2	Read only
10316	Discret input	316	Modul 46 S	Read only
10317	Discret input	317	Modul 46 M	Read only
10318	Discret input	318	Modul 46 B	Read only
10319	Discret input	319	Modul 46 L	Read only
10320	Discret input	320	Modul 46 error	Read only
10321	Discret input	321	Modul 46 R1	Read only
10322	Discret input	322	Modul 46 R2	Read only
10323	Discret input	323	Modul 47 S	Read only
10324	Discret input	324	Modul 47 M	Read only
10325	Discret input	325	Modul 47 B	Read only
10326	Discret input	326	Modul 47 L	Read only
10327	Discret input	327	Modul 47 error	Read only
10328	Discret input	328	Modul 47 R1	Read only
10329	Discret input	329	Modul 47 R2	Read only
10330	Discret input	330	Modul 48 S	Read only
10331	Discret input	331	Modul 48 M	Read only
10332	Discret input	332	Modul 48 B	Read only
10333	Discret input	333	Modul 48 L	Read only
10334	Discret input	334	Modul 48 error	Read only
10335	Discret input	335	Modul 48 R1	Read only
10336	Discret input	336	Modul 48 R2	Read only
10337	Discret input	337	Modul 49 S	Read only
10338	Discret input	338	Modul 49 M	Read only
10339	Discret input	339	Modul 49 B	Read only
10340	Discret input	340	Modul 49 L	Read only
10341	Discret input	341	Modul 49 error	Read only
10342	Discret input	342	Modul 49 R1	Read only
10343	Discret input	343	Modul 49 R2	Read only
10344	Discret input	344	Modul 50 S	Read only
10345	Discret input	345	Modul 50 M	Read only
10346	Discret input	346	Modul 50 B	Read only
10347	Discret input	347	Modul 50 L	Read only
10348	Discret input	348	Modul 50 error	Read only
10349	Discret input	349	Modul 50 R1	Read only
10350	Discret input	350	Modul 50 R2	Read only
10351	Discret input	351	Modul 51 S	Read only
10352	Discret input	352	Modul 51 M	Read only
10353	Discret input	353	Modul 51 B	Read only
10354	Discret input	354	Modul 51 L	Read only
10355	Discret input	355	Modul 51 error	Read only
10356	Discret input	356	Modul 51 R1	Read only
10357	Discret input	357	Modul 51 R2	Read only
10358	Discret input	358	Modul 52 S	Read only

10359	Discret input	359	Modul 52 M	Read only
10360	Discret input	360	Modul 52 B	Read only
10361	Discret input	361	Modul 52 L	Read only
10362	Discret input	362	Modul 52 error	Read only
10363	Discret input	363	Modul 52 R1	Read only
10364	Discret input	364	Modul 52 R2	Read only
10365	Discret input	365	Modul 53 S	Read only
10366	Discret input	366	Modul 53 M	Read only
10367	Discret input	367	Modul 53 B	Read only
10368	Discret input	368	Modul 53 L	Read only
10369	Discret input	369	Modul 53 error	Read only
10370	Discret input	370	Modul 53 R1	Read only
10371	Discret input	371	Modul 53 R2	Read only
10372	Discret input	372	Modul 54 S	Read only
10373	Discret input	373	Modul 54 M	Read only
10374	Discret input	374	Modul 54 B	Read only
10375	Discret input	375	Modul 54 L	Read only
10376	Discret input	376	Modul 54 error	Read only
10377	Discret input	377	Modul 54 R1	Read only
10378	Discret input	378	Modul 54 R2	Read only
10379	Discret input	379	Modul 55 S	Read only
10380	Discret input	380	Modul 55 M	Read only
10381	Discret input	381	Modul 55 B	Read only
10382	Discret input	382	Modul 55 L	Read only
10383	Discret input	383	Modul 55 error	Read only
10384	Discret input	384	Modul 55 R1	Read only
10385	Discret input	385	Modul 55 R2	Read only
10386	Discret input	386	Modul 56 S	Read only
10387	Discret input	387	Modul 56 M	Read only
10388	Discret input	388	Modul 56 B	Read only
10389	Discret input	389	Modul 56 L	Read only
10390	Discret input	390	Modul 56 error	Read only
10391	Discret input	391	Modul 56 R1	Read only
10392	Discret input	392	Modul 56 R2	Read only
10393	Discret input	393	Modul 57 S	Read only
10394	Discret input	394	Modul 57 M	Read only
10395	Discret input	395	Modul 57 B	Read only
10396	Discret input	396	Modul 57 L	Read only
10397	Discret input	397	Modul 57 error	Read only
10398	Discret input	398	Modul 57 R1	Read only
10399	Discret input	399	Modul 57 R2	Read only
10400	Discret input	400	Modul 58 S	Read only
10401	Discret input	401	Modul 58 M	Read only
10402	Discret input	402	Modul 58 B	Read only
10403	Discret input	403	Modul 58 L	Read only
10404	Discret input	404	Modul 58 error	Read only
10405	Discret input	405	Modul 58 R1	Read only
10406	Discret input	406	Modul 58 R2	Read only
10407	Discret input	407	Modul 59 S	Read only
10408	Discret input	408	Modul 59 M	Read only
10409	Discret input	409	Modul 59 B	Read only
10410	Discret input	410	Modul 59 L	Read only



10411	Discret input	411	Modul 59 error	Read only
10412	Discret input	412	Modul 59 R1	Read only
10413	Discret input	413	Modul 59 R2	Read only
10414	Discret input	414	Modul 60 S	Read only
10415	Discret input	415	Modul 60 M	Read only
10416	Discret input	416	Modul 60 B	Read only
10417	Discret input	417	Modul 60 L	Read only
10418	Discret input	418	Modul 60 error	Read only
10419	Discret input	419	Modul 60 R1	Read only
10420	Discret input	420	Modul 60 R2	Read only
10421	Discret input	421	Modul 61 S	Read only
10422	Discret input	422	Modul 61 M	Read only
10423	Discret input	423	Modul 61 B	Read only
10424	Discret input	424	Modul 61 L	Read only
10425	Discret input	425	Modul 61 error	Read only
10426	Discret input	426	Modul 61 R1	Read only
10427	Discret input	427	Modul 61 R2	Read only
10428	Discret input	428	Modul 62 S	Read only
10429	Discret input	429	Modul 62 M	Read only
10430	Discret input	430	Modul 62 B	Read only
10431	Discret input	431	Modul 62 L	Read only
10432	Discret input	432	Modul 62 error	Read only
10433	Discret input	433	Modul 62 R1	Read only
10434	Discret input	434	Modul 62 R2	Read only
10435	Discret input	435	Modul 63 S	Read only
10436	Discret input	436	Modul 63 M	Read only
10437	Discret input	437	Modul 63 B	Read only
10438	Discret input	438	Modul 63 L	Read only
10439	Discret input	439	Modul 63 error	Read only
10440	Discret input	440	Modul 63 R1	Read only
10441	Discret input	441	Modul 63 R2	Read only
10442	Discret input	442	Modul 64 S	Read only
10443	Discret input	443	Modul 64 M	Read only
10444	Discret input	444	Modul 64 B	Read only
10445	Discret input	445	Modul 64 L	Read only
10446	Discret input	446	Modul 64 error	Read only
10447	Discret input	447	Modul 64 R1	Read only
10448	Discret input	448	Modul 64 R2	Read only
10460	Discret input	460	START	Read only
10461	Discret input	461	MANUAL	Read only
10462	Discret input	462	CLOCK	Read only
10463	Discret input	463	PROGRAM	Read only

Datentyp 16bit Integer

Modbus adress	Type	Register no	Control	Mode
10001	Holding register	10	Rangfolge Profil	Read only
10002	Holding register	11	Druck- Profil	Read only
10003	Holding register	12	Schaltuhr-Profil	Read only
10004	Simple Register	13	Druckprofil	Write only Function 0x06
10005	Simple Register	14	Rangfolgeprofil	Write only Function 0x06

Values 1 - 4 (EASY 1-2)  
Values 1 - 4