

**Airleader Web-Server
New Release 6.35
Software Installation Guide**

Download link to the latest Webserver Software:

<https://www.airleader.biz/software/airleader/Airleader-Master-Online-V6.35.exe>

Intended Purpose & Use

The Purpose of this Guide is to instruct the End-User on how to successfully install the new version of the Airleader Software Application.

Requirements & Installation File

Administrative User Rights to the PC

IP Address (shown in Document)

License Code (shown in Document)

Email notifications (if applicable)

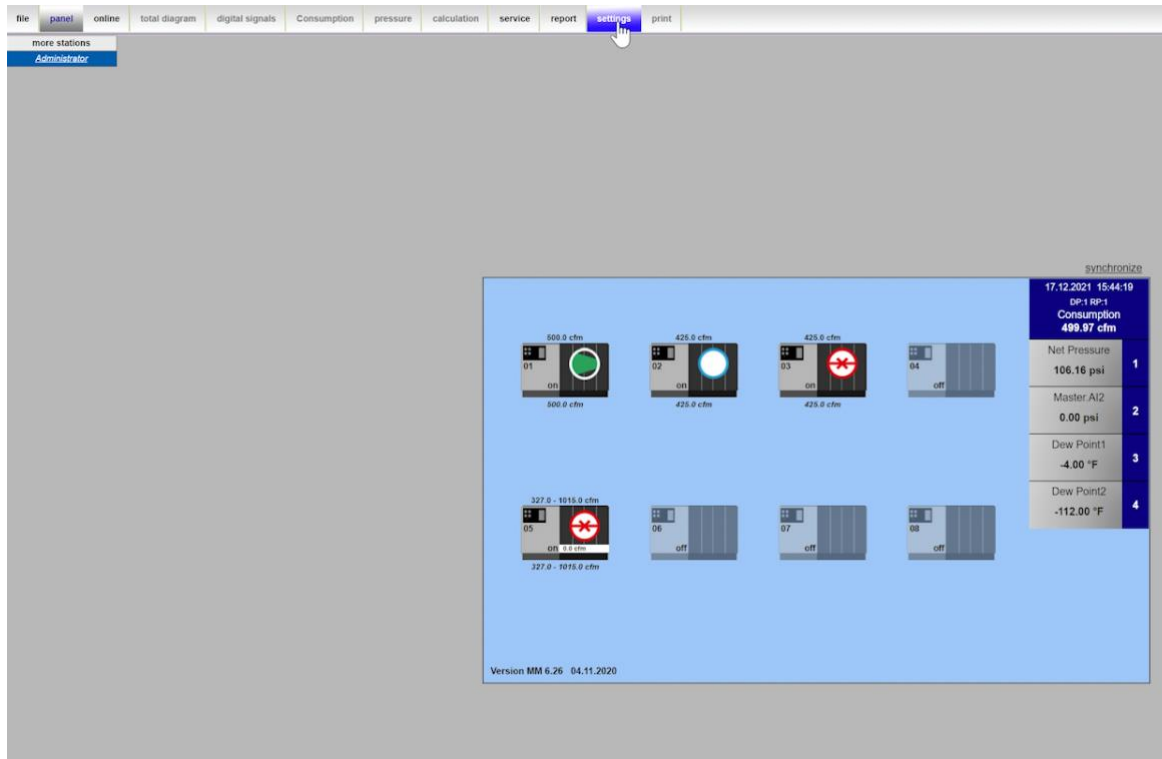
If you migrate to a new computer copy the airleader directory – c:\compressedairdata\name\ to new computer as well as print the configuration table and the information in server properties.

In the Figures below, we will show you step by step how to reach these settings:

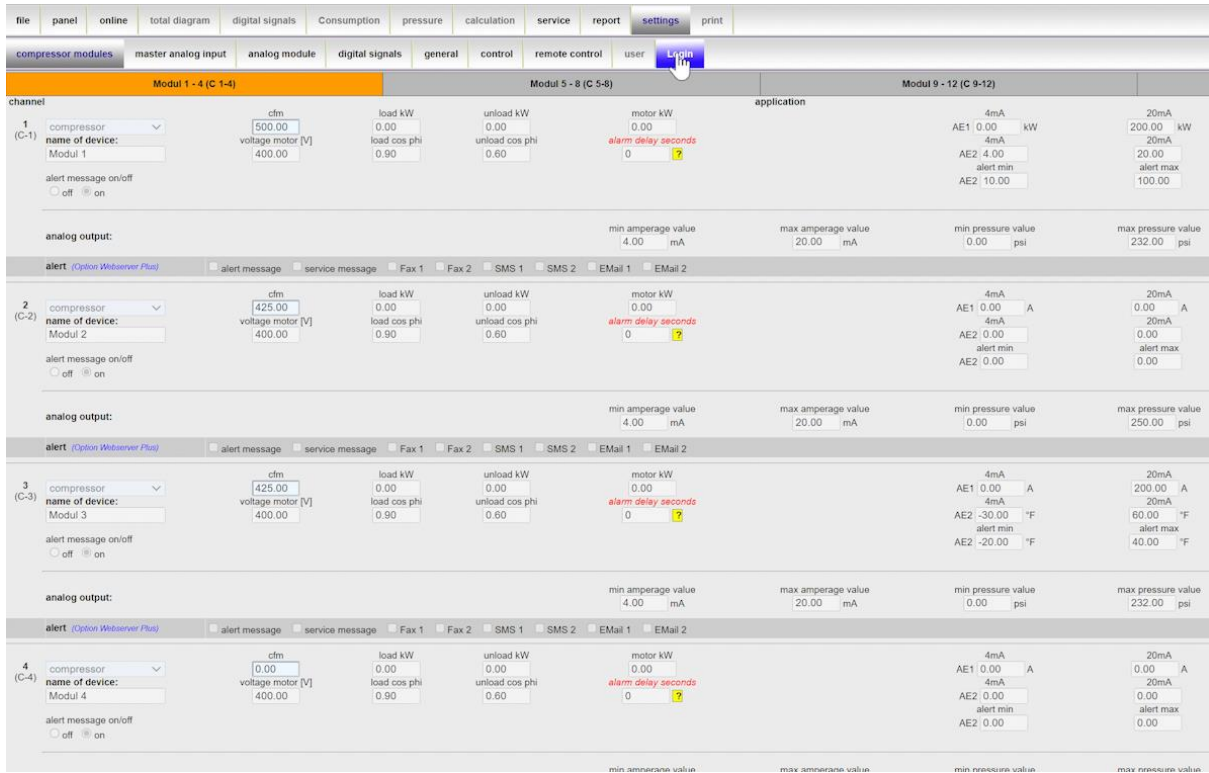
Open the Airleader Online Application



Go Into Settings in The Main Tab on the Top Left Corner



Under Settings Click on “Login”.



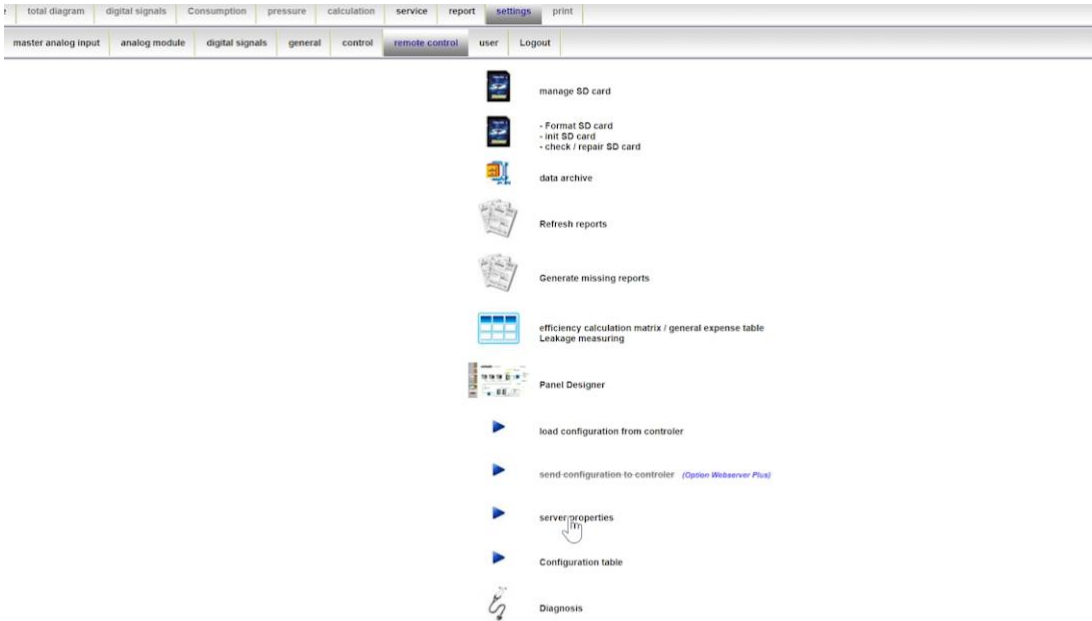
Login using the Username and Password Provided to you.



After we are logged in, we need to head to “Remote Control” located in the Top Sub Menu.



Next we need to access the Server Properties



Under Parameters we will need the following Data:

- a. The IP Address Located under “Controller IP-address” (Example: **192.168.0.1**)
- b. The License Code located under “Code”. (Example: **676-113-24-1022-331-2222-2222**)

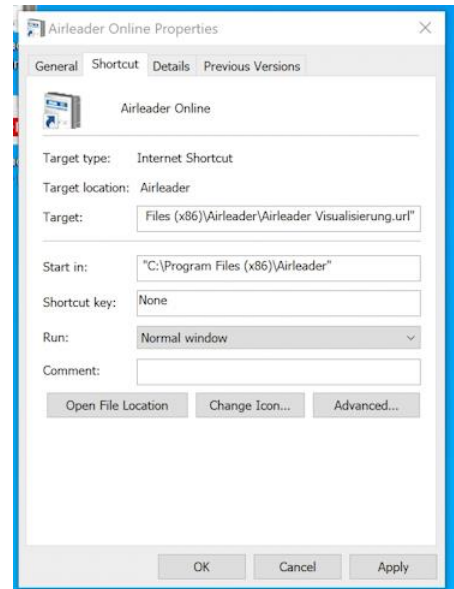
parameter	value
station	Tutorial
data directory	C:/CompressedAirData/Tutorial select directory
controller IP-address	<input type="text"/> Search
	[delete historically configurations] [Delete temp files] [restore configuration]
	Note: press button '+' and '8' simultaneously to set and change IP-address
controller port	10050
Download	<input checked="" type="radio"/> on <input type="radio"/> off
reports with average consumption	<input type="radio"/> on <input checked="" type="radio"/> off
Auto Export	<input type="radio"/> on <input checked="" type="radio"/> off [Export all] (C:/CompressedAirData/Tutorial/export)
Control N°:	2403-01492352
Code:	<input type="text"/> WEB-SERVER Plus Code
start time report generator	02:00 server time edit...

Save the IP Address and License Code (this is very important!)

Removing Previous Airleader Online version

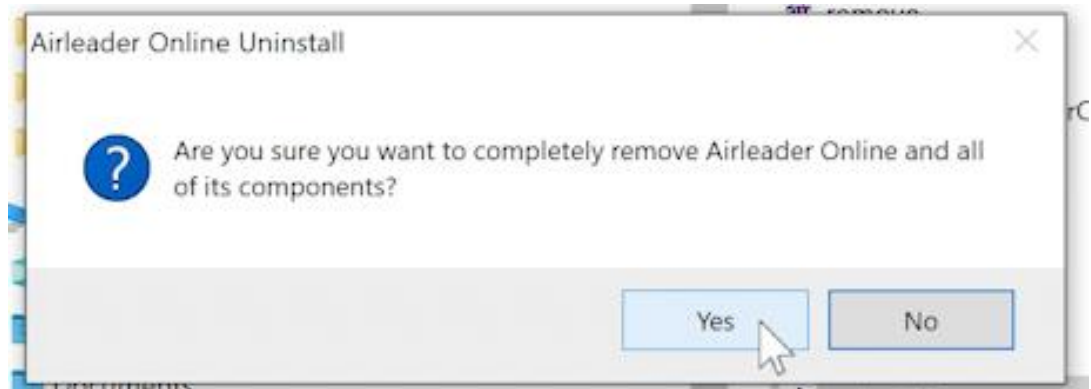
Now that we have the **IP Address** and **License Code**, we can proceed to remove Airleader Online from the PC.

Airleader Online can be removed either via the start Menu in Windows, “**Add or Remove Programs**” or directly in the file directory. You can easily locate the File location by Right Clicking the Application and selecting “**Open File Location**”.

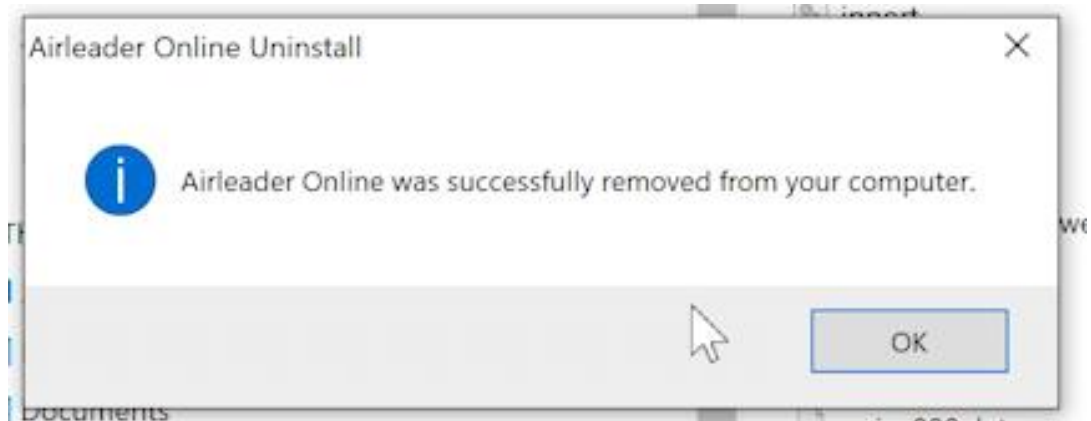


The Generic location of the uninstall file should be **C:/Program Files (x86)/Airleader/unins000**

We will be asked a prompt if we would like to remove all software and components, click **Yes**



We will then receive a Prompt that all components have been removed successfully!



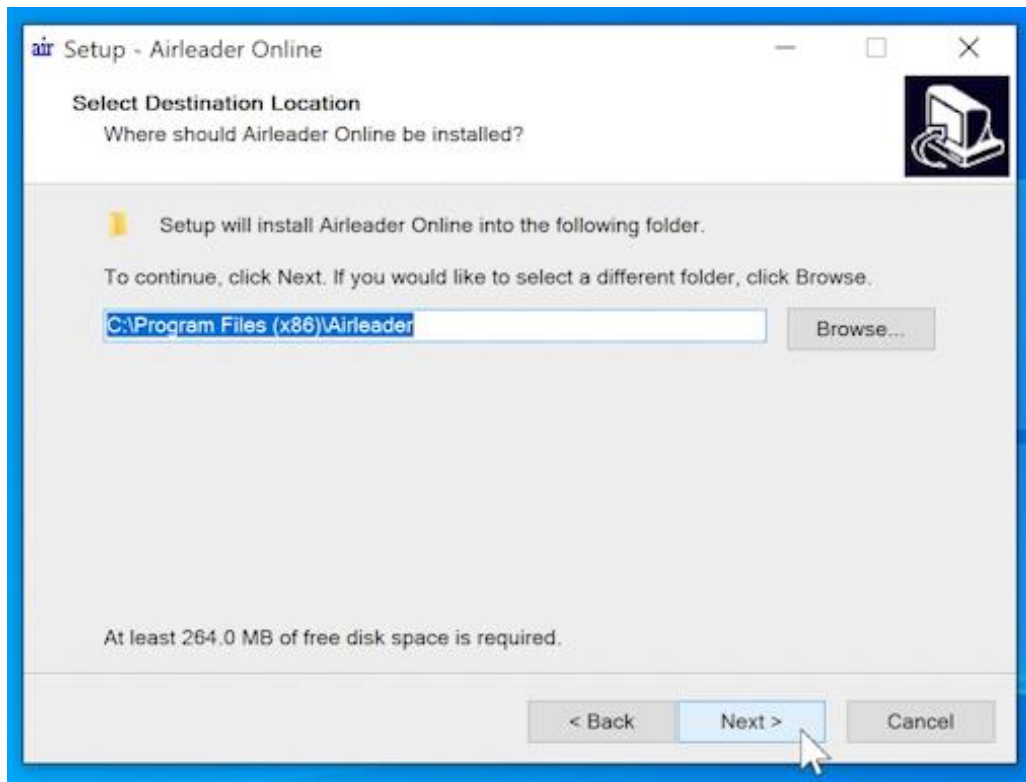
Installing Airleader Online 6.31

If you have already saved your IP and License Code and have successfully uninstalled the Airleader Online Application, we can proceed with the new installation of the Application.

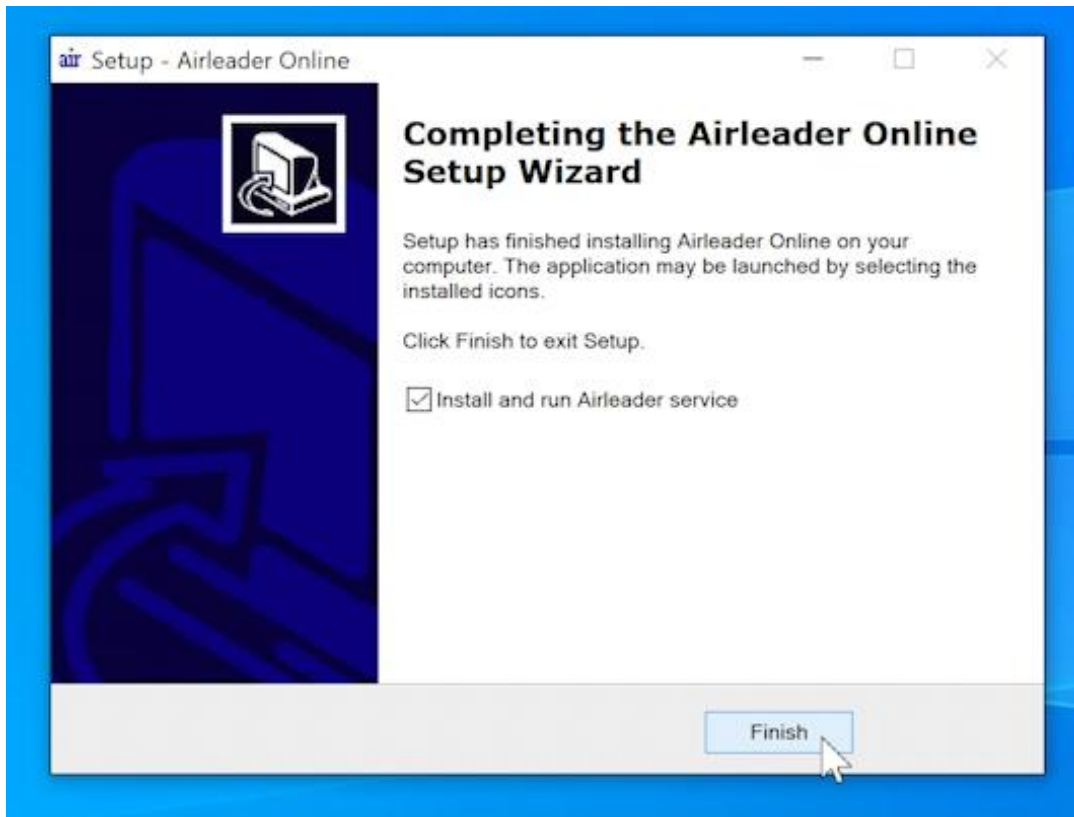
Open the installation file as an Administrator and follow the onscreen installation guide.



First it will ask where you would like to install the application, standard is under **C://Program Files (x86)/Airleader**



Once the Installation has finished, we can open the application



Please select the Language of your choice for the application



Select your Station Name (Previous) and click **next**

Welcome to the Online visualisation configuration assistant

Step 1: Name the station

Please enter a station name:

name:

Info:

In this first step you have to choose a name for your station.
Please take care that this name will be part of the URL from where you can access your station.
Do not use any space or special characters.

Select your Data Directory under "Select Directory" and click **next**.

Step 2: Choosing a data directory

Please choose a data directory

data directory:

Info:

This software generates daily log files of the control data.
To store this data, you have to define a directory where the data should be stored to.

Input the IP address we previously saved and click **next**

Step 3: IP of the control

Please enter the IP-Adress.

IP:

Offline use only. (IP adress is not used)

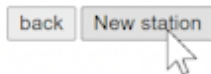
Info:

This software communicates over TCP/IP.
For successful communication, the software has to know the IP-Adress of the control.
You can edit the IP on the control by keycombination '+/' and '8'.

Once finished, we will have a summary of the Station Name, Data Directory and the IP Address we entered. If everything is correct, we can click **New station**

All entries are done. The station will be created with the following parameters:

- name: Tutorial
- data directory: C:/CompressedAirData/Tutorial
- IP: 192.168.0.130



Hint: If the Data Directory is very large, it will take a few minutes for the Station to complete.

To close the installation process, we need to log back into the account and replace/add the License Code into the Server Properties.

parameter	value
station	Tutorial
data directory	C:/CompressedAirData/Tutorial select directory
controller IP-address	<input type="text"/> Search
[delete historically configurations] [Delete temp files] [restore configuration]	
Note: press button "+" and 8 simultaneously to set and change IP-address	
controller port	10050
Download	<input checked="" type="radio"/> on <input type="radio"/> off
reports with average consumption	<input type="radio"/> on <input checked="" type="radio"/> off
Auto Export	<input type="radio"/> on <input checked="" type="radio"/> off [Export all] (C:/CompressedAirData/Tutorial/export)
Control N°:	2403-01492352
Code:	<input type="text"/> WEB-SERVER Plus Code
start time report generator	02:00 server time edit...

Lastly if applicable, you may enter your Email for notifications.

mailing settings	
mail host	<input type="text"/>
SMTP Port	587
mail user	airleader [MailConfig-Test]
mail password	*****
mail sender	<input type="text"/> [MailConfig-Test]
Change messages Email	<input type="text"/>