

## Airleader Modbus Server



### Output Interface

TCP / RTU

Article # 9015



Airleader Modbus Interface represent the live Airleader data in Modbus protocol.

There two modes available:

1. Modbus TCP
2. Modbus serial ASCII

### Installation:

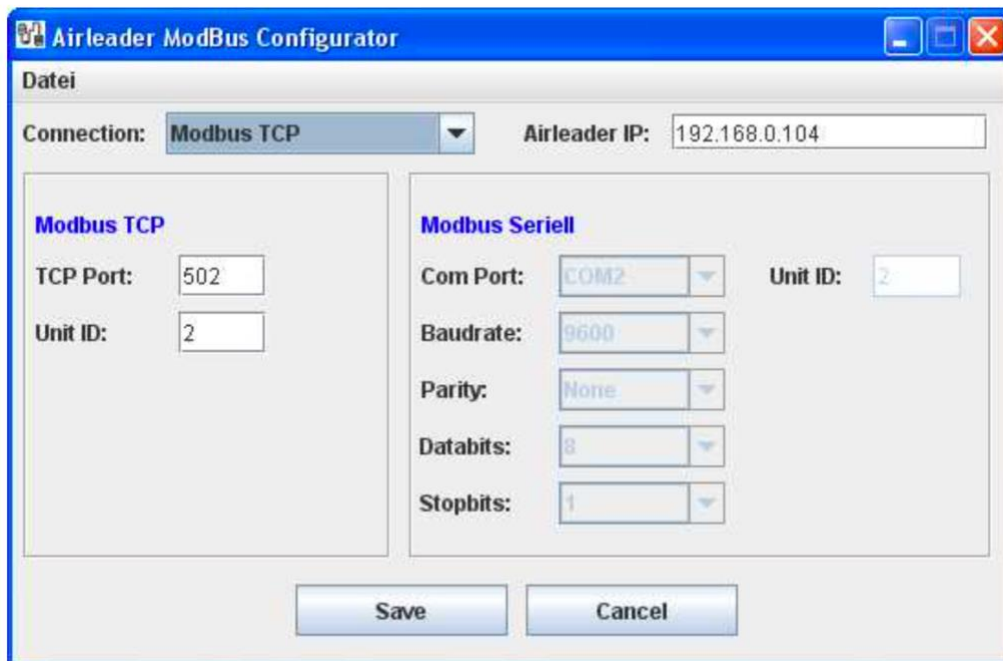
Start the program Airleader-Modbus-Interface-?????.exe; ..... and follow the commands.

After the installation, the configurator starts.

Here you can configure the IP address of the controller and change the TCP or serial properties.

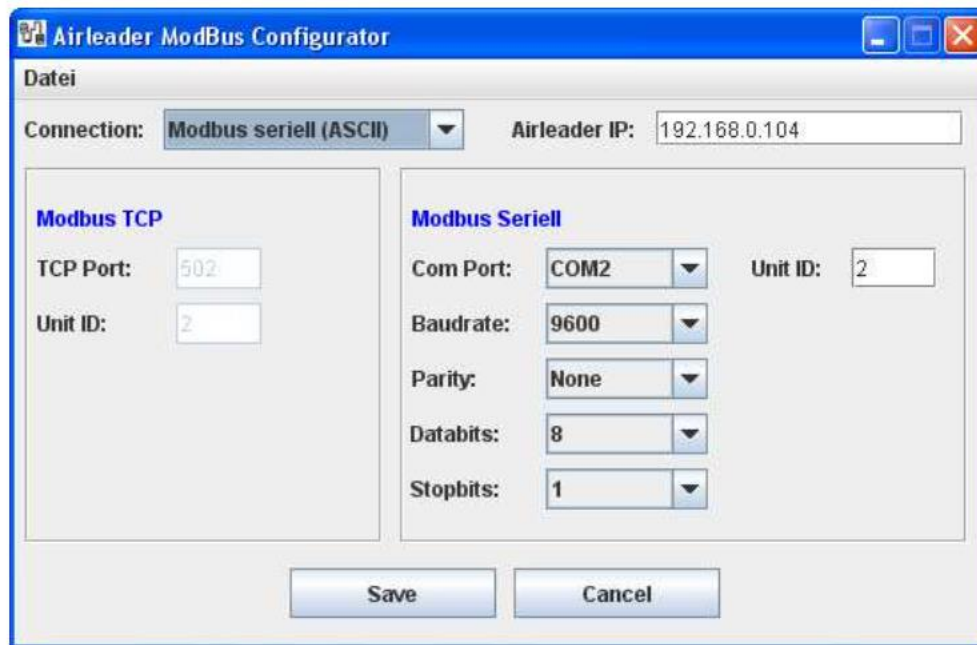
**The Modbus interface always works as a Modbus slave.**

### Mode Modbus TCP:



Modify the TCP Port if necessary (default is 502).

## Mode Modbus ASCII:



Modify the serial settings for your needs.

Unit ID must be set. This is the address of the client in the Modbus Network. Unit ID must be unique in the network.

Click on save and the service will be updated and restarted.

Attachments: Airleader Modbus Register